

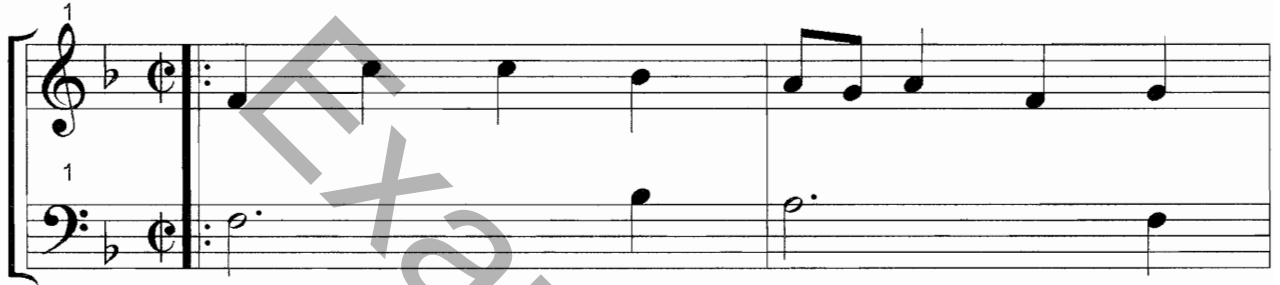
The Blue Skunk Circus

A Jig

Daniel P. Zielske

Half-Note = 100 b.p.m.

Calliope



Calli.



Calli.



Calli.



Copyright 2002 Daniel P. Zielske

Calli.

12

This system contains measures 12, 13, and 14. The treble clef staff begins with a half rest in measure 12, followed by eighth notes in measures 13 and 14. The bass clef staff has a half note in measure 12, a dotted half note in measure 13, and a half note in measure 14. The key signature has one flat.

Calli.

15

This system contains measures 15, 16, and 17. Measures 15 and 16 are followed by a double bar line. Measure 17 begins with a repeat sign. The treble clef staff has eighth notes in measures 15 and 16, and eighth notes in measure 17. The bass clef staff has a half note in measure 15, a half note in measure 16, and a dotted half note in measure 17. The key signature has one flat.

Calli.

18

This system contains measures 18, 19, and 20. The treble clef staff has a half note in measure 18, followed by eighth notes in measures 19 and 20. The bass clef staff has a dotted half note in measure 18, a half note in measure 19, and a half note in measure 20. The key signature has one flat.

Calli.

21

This system contains measures 21, 22, and 23. The treble clef staff has a half note in measure 21, followed by eighth notes in measures 22 and 23. The bass clef staff has a half note in measure 21, a dotted half note in measure 22, and a half note in measure 23. The key signature has one flat.

Calli.

24

This system contains measures 24, 25, and 26. The treble clef staff has a half note in measure 24, followed by eighth notes in measures 25 and 26. The bass clef staff has a dotted half note in measure 24, a half note in measure 25, and a half note in measure 26. The key signature has one flat.

Calli.

27

Calli.

30

First Ending

Calli.

33

Calli.

34

Calli.

37

Calli.

40

40

Calli.

43

43

Calli.

46

46

Calli.

49

49

Fine

Fine

**Written espeically in honor of
Jack McGowen's Historyfest
Fall of 2002
For a 100 year old Calliope
and the Mankato Area
Sesquicentennial**